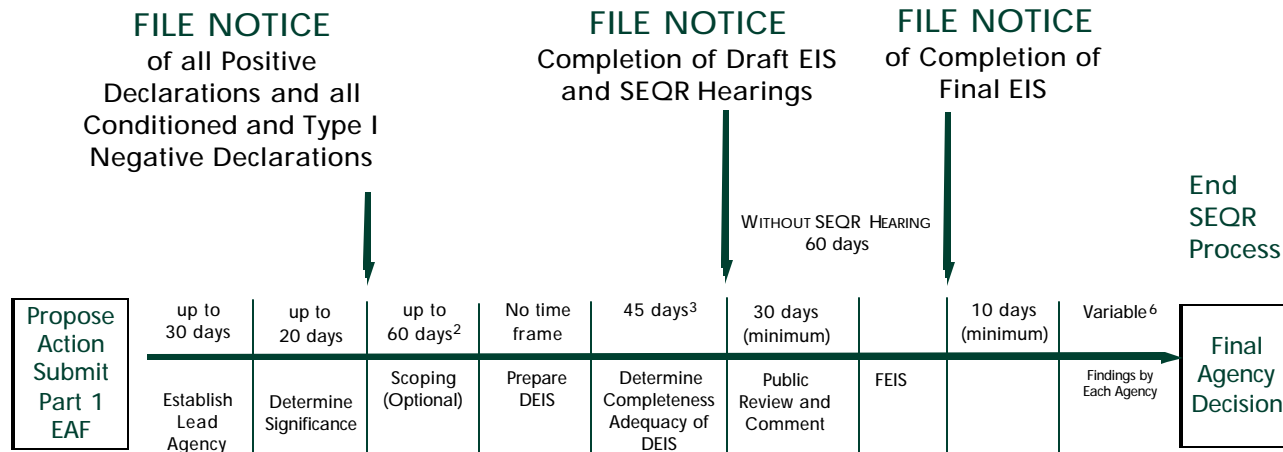
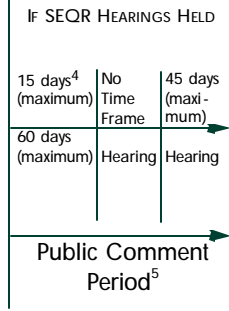


# SEQR TIME FRAMES<sup>1</sup>



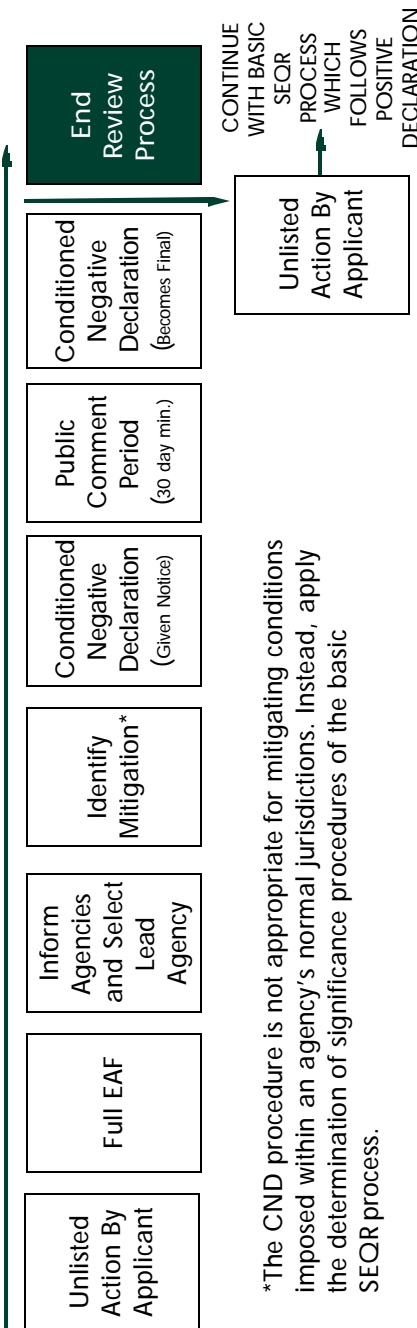
## Footnotes

- 1-All time frames may be extended by mutual consent of involved parties.
- 2-Time clock starts with submission of draft scope by applicant
- 3-Thirty days resubmitted DEIS
- 4-Publish hearing in general circulation newspaper at least 14 days before a public hearing. The hearing may commence on the 15th day.
- 5-Public comment must remain open until 10 days after the close of hearing.
- 6-When applicant is involved, lead agency findings and decisions must be made within 30 days of filing the FEIS; otherwise, findings not required until an agency must make a decision on final action.



## CONDITIONED NEGATIVE DECLARATION (CND) PROCESS

(Possible only for Unlisted Actions proposed by an applicant)

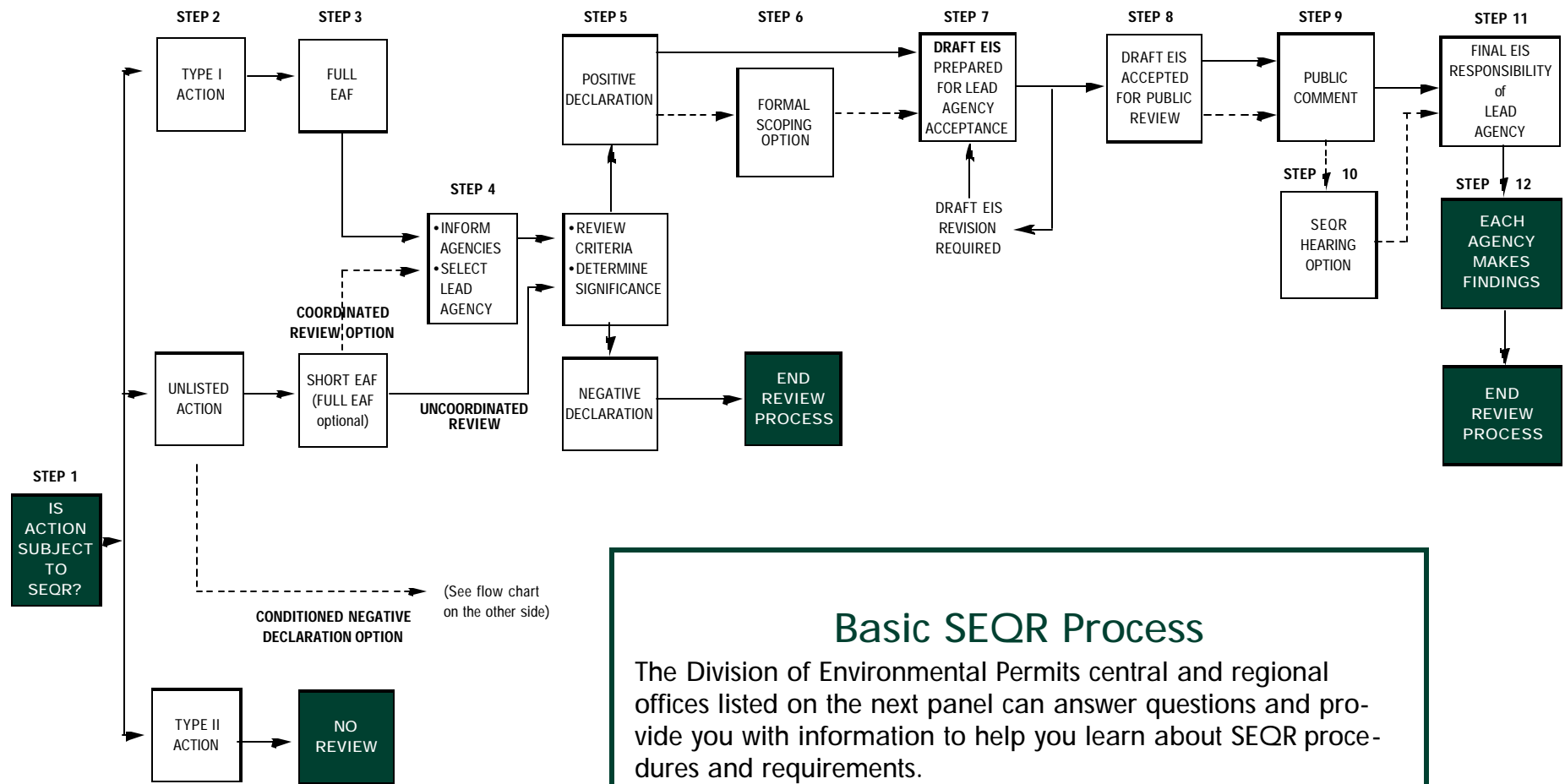


\*The CND procedure is not appropriate for mitigating conditions imposed within an agency's normal jurisdictions. Instead, apply the determination of significance procedures of the basic SEQR process.



# SEQR FLOW CHART AND TIME FRAMES





(See flow chart on the other side)  
 CONDITIONED NEGATIVE DECLARATION OPTION

## Basic SEQR Process

The Division of Environmental Permits central and regional offices listed on the next panel can answer questions and provide you with information to help you learn about SEQR procedures and requirements.

These references are available:

- The statewide SEQR regulations, 6 NYCRR Part 617 (the latest revision effective July 12, 2000)
- The SEQR Cookbook—a step-by-step discussion of the basic SEQR process
- What is SEQR—An introductory brochure
- Applicant’s Guide to SEQR
- Citizen’s Guide to SEQR
- Local Official’s Guide to SEQR
- DEC SEQR website: [www.dec.ny.gov/public/357.html](http://www.dec.ny.gov/public/357.html)

- Region 1 (Nassau, Suffolk counties)  
 Building 40, SUNY at Stony Brook  
 Stony Brook, NY 11790-2356 (631) 444-0359  
 Fax (631) 444-0360
- Region 2 (all of New York City)  
 One Hunters Point Plaza, 47-40 21st Street  
 Long Island City, NY 11101-5407 (718) 482-4997  
 Fax (718) 482-4975
- Region 3 (Dutchess, Orange, Putnam, Rockland, Sullivan, Ulster, Westchester counties)  
 21 South Putt Corners Road  
 New Paltz, NY 12561-1696 (845) 256-3054  
 Fax (845) 255-3042
- Region 4 (Albany, Columbia, Delaware, Greene, Montgomery, Otsego, Rensselaer, Schenectady, Schoharie counties)  
 1150 North Westcott Road  
 Schenectady, NY 12306-2014 (518) 357-2069  
 Fax (518) 357-2460
- Region 5 (Clinton, Essex, Franklin, Fulton, Hamilton, Saratoga, Warren, Washington counties)  
 Route 86, PO Box 296  
 Ray Brook, NY 12977-0296 (518) 897-1234  
 Fax (518) 897-1394
- Region 6 (Herkimer, Jefferson, Lewis, Oneida, St. Lawrence counties)  
 State Office Building, 317 Washington Street  
 Watertown, NY 13601-3787 (315) 785-2245  
 Fax (315) 785-2242
- Region 7 (Broome, Cayuga, Chenango, Cortland, Madison, Onondaga, Oswego, Tioga, Tompkins counties)  
 615 Erie Boulevard West  
 Syracuse, NY 13204-2400 (315) 426-7438  
 Fax (315) 426-7425
- Region 8 (Chemung, Genesee, Livingston, Monroe, Ontario, Orleans, Schuyler, Seneca, Steuben, Wayne, Yates counties)  
 6274 East Avon-Lima Road  
 Avon, NY 14414-9519 (585) 226-2466  
 Fax (585) 226-2830
- Region 9 (Allegany, Cattaraugus, Chautauqua, Erie, Niagara, Wyoming counties)  
 270 Michigan Avenue  
 Buffalo, NY 14203-2999 (716) 851-7165  
 Fax (716) 851-7168
- Central Office, Environmental Permits  
 625 Broadway 4th Floor  
 Albany, NY 12233-1750  
 (518) 402-9167 Fax (518) 402-9168